

STREET

EDWARD

KING

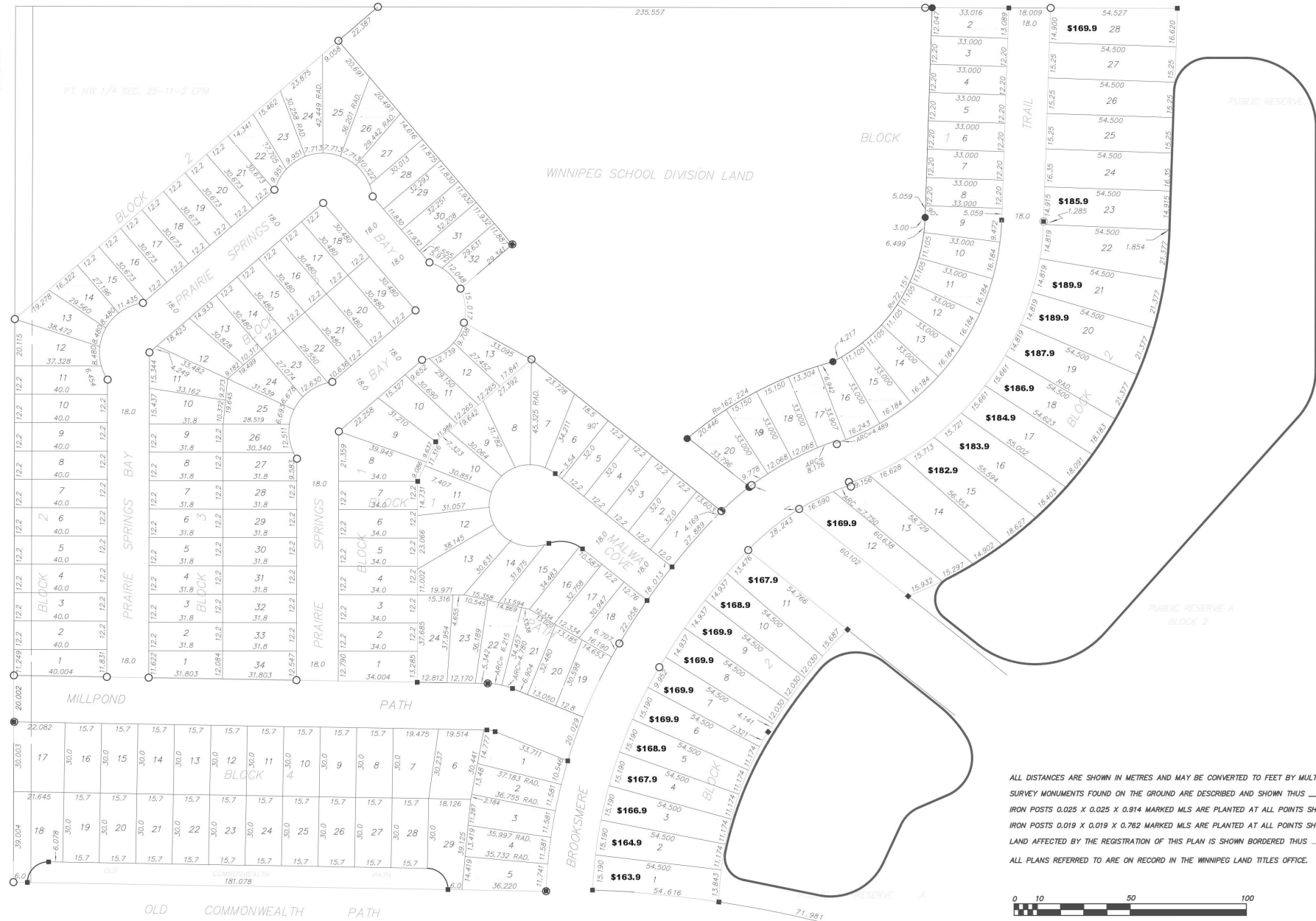
235.557

PT. NW 1/4 SEC. 25-11-2 EPM

WINNIPEG SCHOOL DIVISION LAND

PUBLIC RESERVE

PUBLIC RESERVE A  
BLOCK 2



ALL DISTANCES ARE SHOWN IN METRES AND MAY BE CONVERTED TO FEET BY MULTIPLYING BY 3.28084.  
 SURVEY MONUMENTS FOUND ON THE GROUND ARE DESCRIBED AND SHOWN THIS ○  
 IRON POSTS 0.025 X 0.025 X 0.914 MARKED MLS ARE PLANTED AT ALL POINTS SHOWN THIS ■  
 IRON POSTS 0.019 X 0.019 X 0.762 MARKED MLS ARE PLANTED AT ALL POINTS SHOWN THIS ●  
 LAND AFFECTED BY THE REGISTRATION OF THIS PLAN IS SHOWN BORDERED THIS —  
 ALL PLANS REFERRED TO ARE ON RECORD IN THE WINNIPEG LAND TITLES OFFICE.

**LOMBARD NORTH GROUP**  
 LANDSCAPE ARCHITECTS + PLANNERS  
 1000 BROADVIEW AVE. SUITE 100  
 WINNIPEG, MB R2S 0R8  
 T 204.982.1111  
 F 204.982.1112  
 www.lombardnorth.com

This drawing must not be scaled. The contractor shall verify all dimensions and other data on site prior to commencement of work. Discrepancies, errors, and omissions are to be reported to the Landscape Architect prior to proceeding with the Work.  
 Drawings and specifications and arrangements of service are the property of the Landscape Architect. The copyright in the same being reserved to him.  
 No reproduction or revision to these drawings may be made without the permission of the Landscape Architect, and any reuse thereof shall bear his name. All plans to be returned to the Landscape Architect upon request.

Project Number  
 Project:  
**WATERFORD GREEN**

Sheet Title  
**Phase 4A Lot Availability Map**

Sheet Number  
**1**